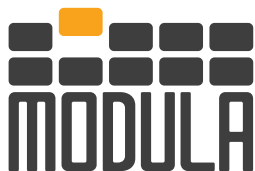




**SOLUTIONS** for  
any **APPLICATION**



[modula.com](http://modula.com)



**NEW  
PRODUCTS**

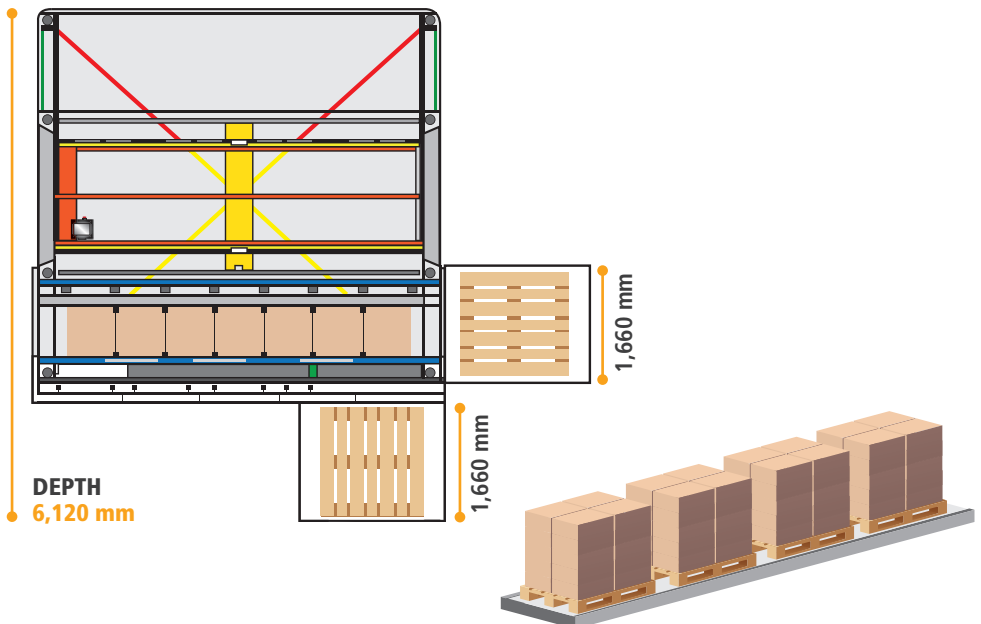
**WITH MODULA YOU CAN NOW  
STORE YOUR PALLETS!**

The Modula Lift is the right solution for your pallet storage!

Very easy with a pallet truck that allows you to load at the front of the lift or from the side!

**Technical data:**

- designed for Euro pallets (1,200x800 mm)
- dynamic storage based on the respective product height
- possible handling of **2 pallets (MA)**, **3 pallets (MX)**, **4 pallets (ML)**
- maximum payload: **990 kg**
- **max 1,200 mm** stored goods height (gross).



## MODULA AND AMR

### AUTOMATIC STORAGE SYSTEMS AND AUTONOMOUS MOBILE ROBOTS

There are different types of integration between MIR and Modula:

- **manual picking** by operators,
- **automatic picking** (robots pick up and place directly)
- **pallets handling**
- **integration with co-bots** (no human interactions)
- **hook version:** automatically moving the picking cart to the consolidation order area or to shipping areas.

AMRs can move load carriers (eg. Boxes or pallets), automatically or manually retrieved from a Modula to any destination in the plant, using accurate navigation. Your MiR can support downstream processes at remote sites like value-added-service, consolidation or shipping areas.

#### MANUAL PICKING



#### PALLET HANDLING



#### CO-BOTS MIR PLATFORM ROBOTS



#### MIR-HOOK AND PICKING CART



## VERTICAL SOLUTIONS

### MODULA HAS A SOLUTION FOR ALL YOUR NEEDS

Vertical automatic storage systems for picking and storing materials of any weight and size, for any sector.

- From 1.6 m depth
- Up to 16 m height
- Tray capacity up to 990 kg
- Different types of operator bays
- Tray widths from 1,300 to 4,100 mm
- Tray depths 420 - 857 - 1,257 mm

#### LIFT



Height, depth, load capacity, type and number of bays as well as tray width can be selected to obtain a customized configuration of the system

#### SLIM



Depth  
1,600 mm

THE BENEFITS OF OUR SOLUTIONS, INTEGRABLE WITH OTHER AUTOMATED SYSTEMS



FLEXIBILITY



TIME SAVINGS



SPACE SAVINGS

## SPECIAL APPLICATIONS

To meet even the most specific needs, Modula has developed some special versions of its storage systems.

- Insulated storage system to guarantee controlled temperature/humidity conditions
- Storage systems for clean rooms
- Storage systems equipped with fire-extinguishing system

Electronics, plastics, food & beverage and retail are just some of the sectors that can take advantage of these new solutions.



### MODULA CLIMATE CONTROL CONTROLLED TEMPERATURE AND HUMIDITY

Temperature range from +2°C to +25°C ( $\pm 1^\circ\text{C}$ )  
with controlled relative humidity  $\geq 5\%$

### MODULA CLEAN ROOM CLEAN ROOM

From ISO6 to ISO8 according to ISO14644-1:2016



### MODULA FIRE FIGHTING FIRE PREVENTION SYSTEM

Condensed aerosol fire suppression systems  
using potassium carbonate salts



**SPECIALLY DEVELOPED  
SOFTWARE APPLICATIONS**



**ERGONOMICS AND  
OPERATOR SAFETY**



**FAST ROI**



**FEWER ERRORS**

## HORIZONTAL SOLUTIONS

### HORIZONTAL CAROUSEL

Horizontal automatic storage system for picking and storing small and medium-size materials.

- Fast picking
- **Easy-to-install** even in facilities with **low ceilings** (3 m)
- Length up to 50 m
- Up to 4 carousels per pod.



## PICKING SOLUTIONS

### IMPROVE PRODUCTIVITY

Vertical storage systems and horizontal carousels are particularly flexible and modular storage solutions.

### PUT TO LIGHT

Put to Light solutions are the best option for order preparation when a fast, intuitive, scalable and error-free process is needed.



- 7-color validation button
- 128x32 pixels OLED display
- Aluminum support structure

### PICKING STATION (PUT WALL)

A picking station is a fixed, all inclusive and modular put-wall with various customer order locations.



- Integrated Put to Light system
- Put to Light system for up to 3 shelves
- Modular design

### PICKING CART

A picking cart is a mobile, all inclusive and modular station, equipped with several order-picking positions.



- Manual or automatic transport
- Integrated Put to Light system
- Put to Light system for up to 3 shelves
- Built-in Wi-Fi

### MOBILE PICKING APP

The new APP for Android devices provides maximum mobility for operations with all manual storage systems managed through Modula WMS.



# MODULA WAREHOUSE SOFTWARE

Software capable of managing Modula storage systems with high efficiency to obtain the best performance.

- **Manual and automatic storage system management**
- **Inventory management**
- **Optimization of picking and placing orders**
- **Interface with ERP and DMS software**



## MODULA WMS BASE

Basic version of our WMS, designed for those who want to manage their Modula system efficiently but do not need to connect it to the company's ERP and to use special additional functions.



## MODULA WMS PREMIUM

A complete package that can be expanded and integrated even with the company's ERP systems.



## MODULA DRIVER



## MODULA LINK

These two software packages can be used by companies who already **have a WMS and want to connect it to the Modula**, so as to manage all activities with the same system, **without having to change their own management software.**



**OPTIMISATION**



**ERP INTEGRATION**



**SAVES TIME**



## SPECIAL FEATURES

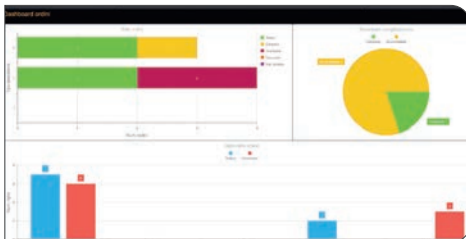
Modula has developed some applications which are offered with Modula WMS Premium and allow all storage system activities to be monitored in a simple and intuitive manner.

The following are the latest additions to the range of packages currently available:



### DASHBOARD

The Modula Dashboard is a “Digital dashboard” that can be configured with various widgets to display the performance data of the Modula system. It can provide information in real time, such as order status, item and picking statistics and much more through a simple interface that can be accessed from the web via PC or mobile. The Dashboard displays data by acquiring it from the Modula WMS software, but it is also possible to configure external datasources.

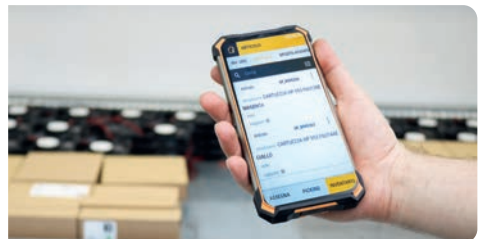


### MOBILE PICKING APP

The Modula mobile picking app for Android devices allows you to operate in complete mobility on all manual warehouses managed through Modula WMS.

The intuitive user interface allows you to perform picking and storage operations with just a few clicks. If required, you can use the barcode reader and the built in camera of your device.

The application can be installed on any Android device from version 8 to 11.



CONFIGURABILITY



CONTROL AND EFFICIENCY

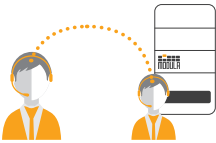


EASE OF USE

## 360° SERVICES

### A WIDE RANGE OF SERVICES

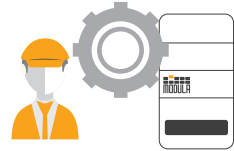
Our team of specialist technicians support companies throughout each phase of the process of optimizing their warehouse, from the design phase through to implementation, offering high-quality 360° support.



**TELEPHONE SUPPORT**  
Hardware and Software



**REMOTE ASSISTANCE  
THROUGH TEAMVIEWER**



**OPTIONS AND  
SPARE PARTS KITS**



**ON-SITE  
MAINTENANCE**



**PREVENTIVE  
MAINTENANCE**



**MODIFICATIONS  
AND RELOCATION**



**AFTER-SALES  
CONSULTATION**



**UPGRADES, UPDATES AND  
SOFTWARE CONSULTING**



**TRAINING**

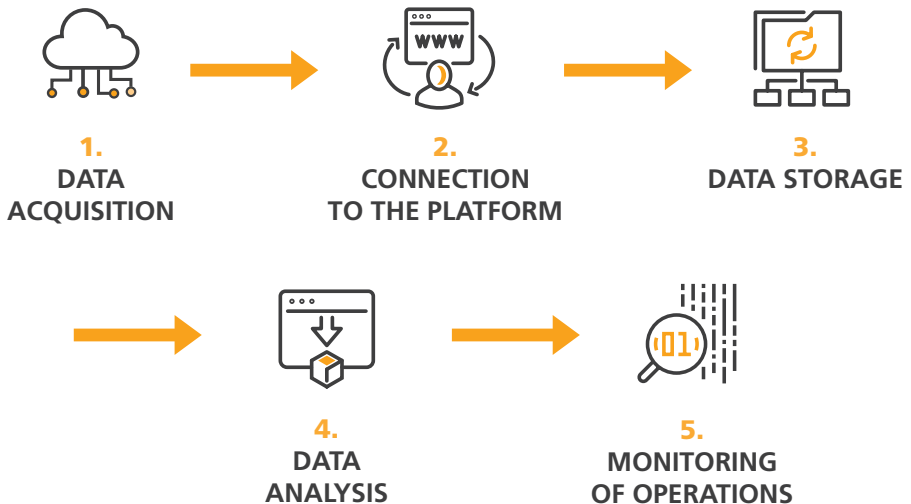
## MODULA CLOUD

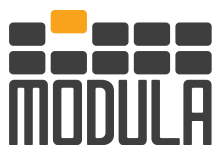
### YOUR MODULA SYSTEMS SMARTLY LINKED

Modula Cloud is the portal where all information relating to storage system activities is available and accessible through the internet:



- System master data
- Storage system status (online - offline - error)
- Consumption
- Machine parameters (weight - volume - surface area)
- Work cycles
- Maintenance
- Support tickets
- System logs and much more.





**MODULA S.p.A.**  
via San Lorenzo 41  
Salvaterra di Casalgrande (RE)  
Tel. +39 0522 774111  
[info@modula.com](mailto:info@modula.com)  
[www.modula.com](http://www.modula.com)

